



Introducing Space in a Non-Computational Context

Timothy M. Bray
University of Texas at Dallas



A Key Organizing Principle

Space is not *just* spatial analysis.

Key Benefits of SPACE Workshop

- Organized Instructional Content
 - Master instructors in spatial and geographic sciences
 - Master instructors in pedagogy
- Non-Structured Interaction

Key Skills and Concepts Learned or Enhanced

- Importance of Developing Students' Spatial Thinking
 - Improving analytical understanding
 - Providing a fresh, insightful perspective
- Techniques for Communicating Spatial Concepts to Students
- Techniques for Evaluating Student Comprehension and Understanding

Key Non-Computational Approaches

- How students understand theoretical explanations of crime (CJS 1307)
- How students think about administrative issues in policing (CJS 4314)
- How students think about crime and social issues (CJS 4323)



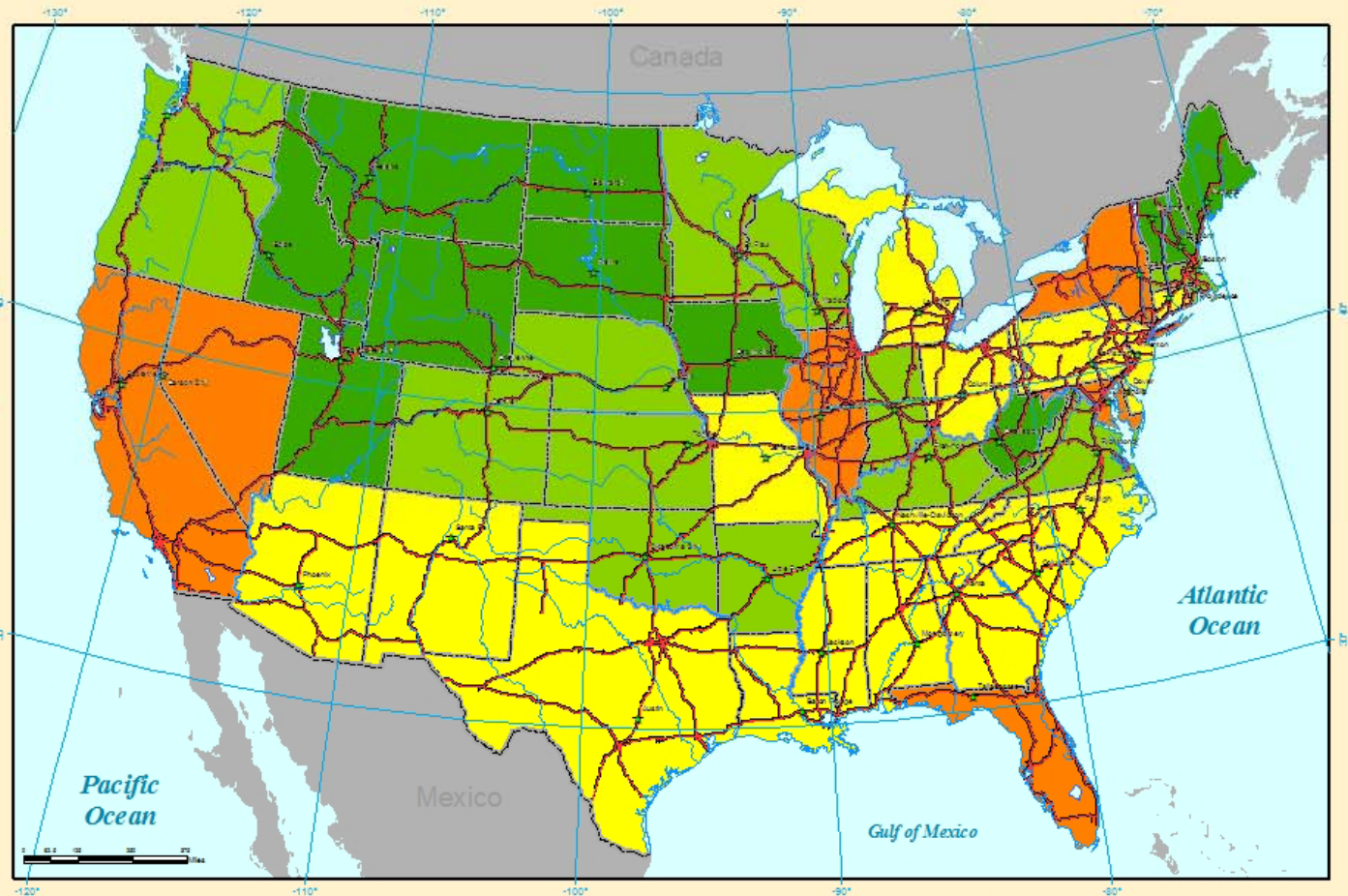
Space and Theory

Introduction to Crime & Criminology
CJS 1307

Alaska



Hawaii



United States of America 2002 Robbery Rate per 100,000 Population

★ Capital Cities	Robbery Rate
— Rivers	91,00000 - 49,200000
— Interstate Highways	49,200001 - 111,900000
— Lakes	111,900001 - 172,900000
— State Boundaries	172,900001 - 245,900000
	245,900001 - 671,600000

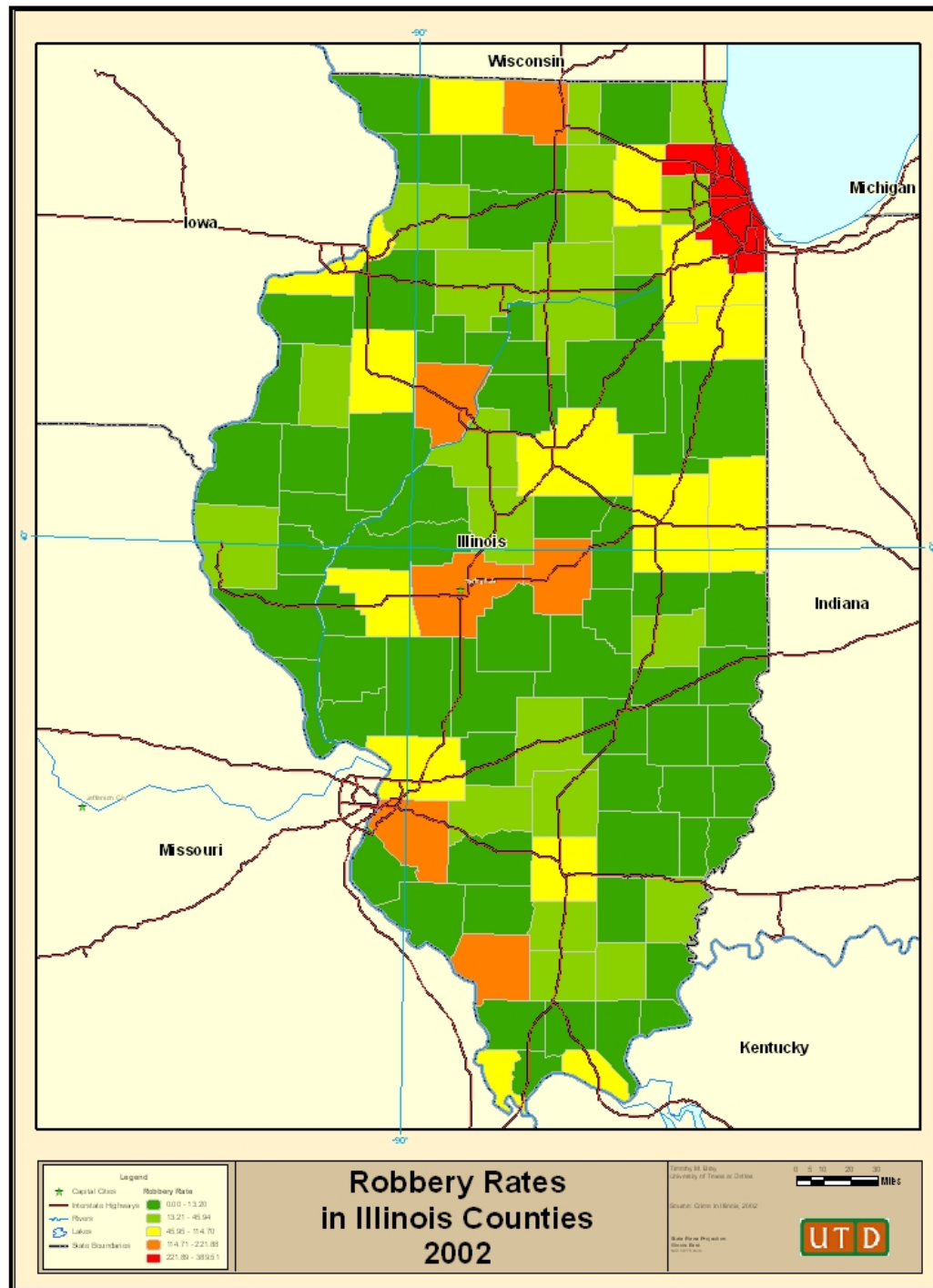
Timothy M. Bray
January 2005

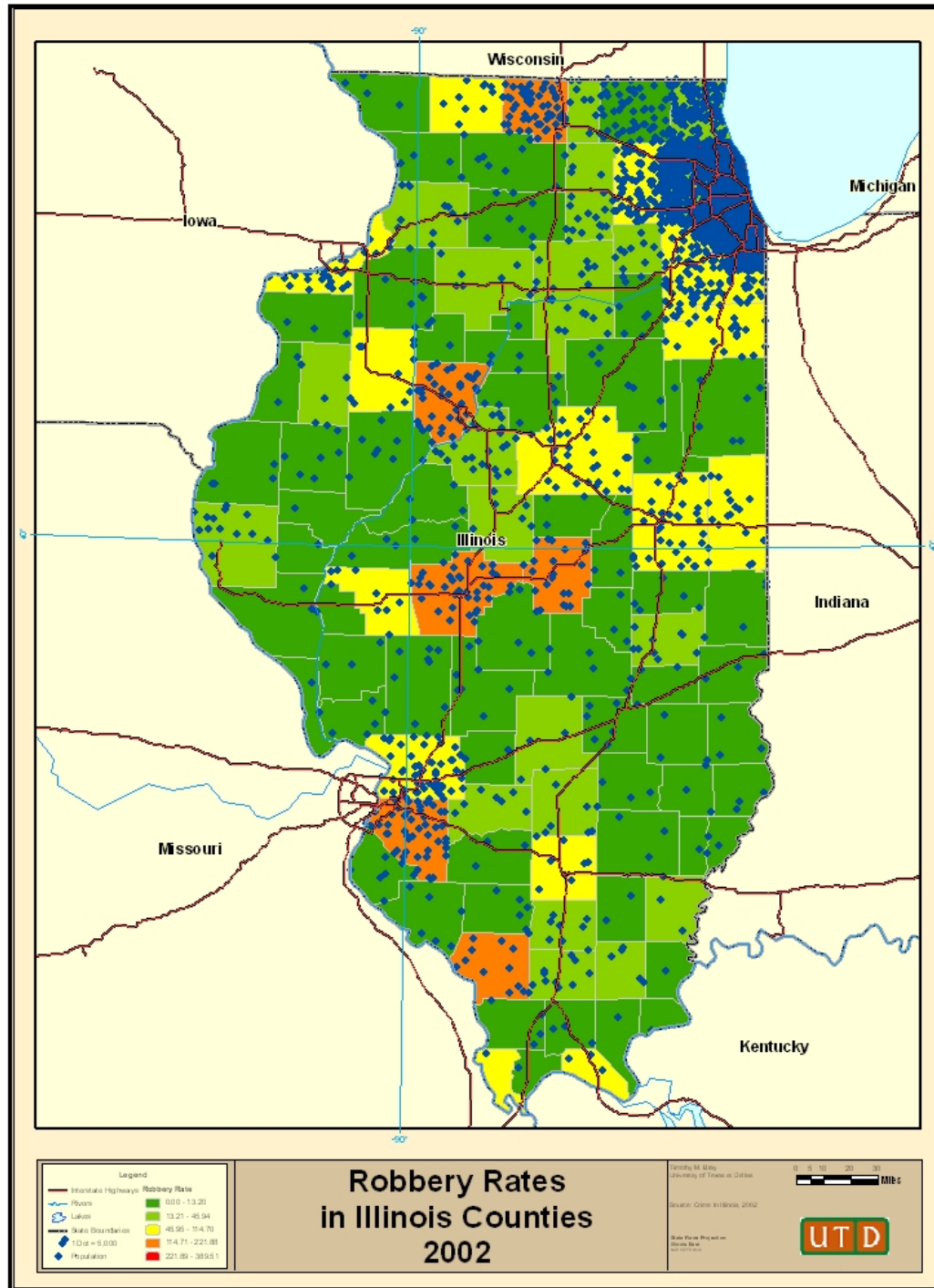
Source: United State FBI
Uniform Crime Reports



Albers Projection
Data Source: ESRI
Data Provider: ESRI
Software: ArcGIS

Prepared February 11, 2005





Prepared February 11, 2005



Administrative Importance

Current Issues in Policing
CJS 4314

Your Basic Table...

Division	Chief	Performance
North Central	Baker	O.K.
Northwest	Getraer	Worse
Southwest	Grossman	Worse
Southeast	Baricza	Very Good
Northeast	Poncherello	Find a New Job
Central	Clark	Very Good

Prepared February 11, 2005

Note: All Data In This Exercise Are Fictitious

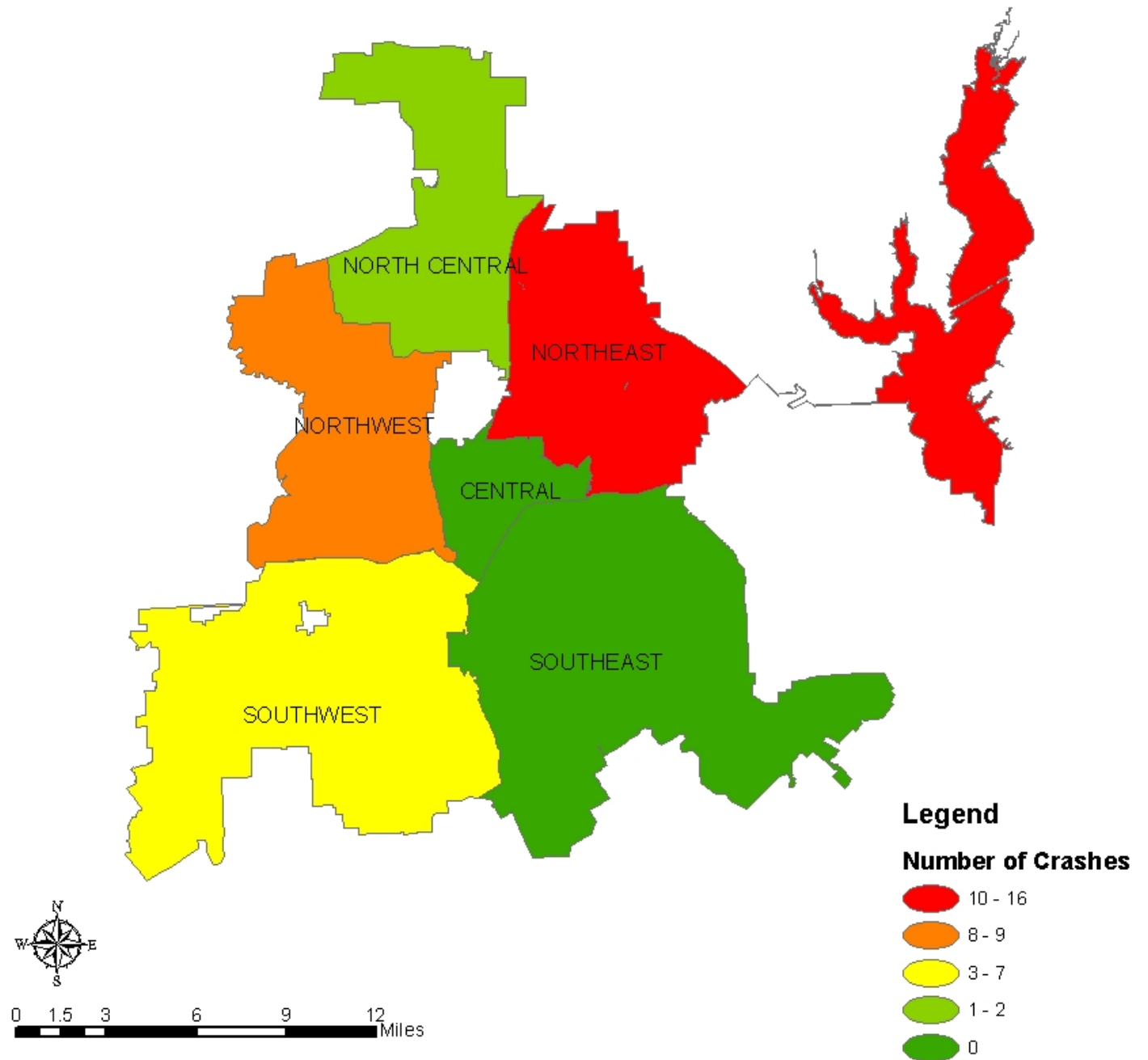
An Improved Table...

Division	Chief	Performance
North Central	Baker	2
Northwest	Getraer	9
Southwest	Grossman	7
Southeast	Baricza	0
Northeast	Poncherello	16
Central	Clark	0

Prepared February 11, 2005

Note: All Data In This Exercise Are Fictitious

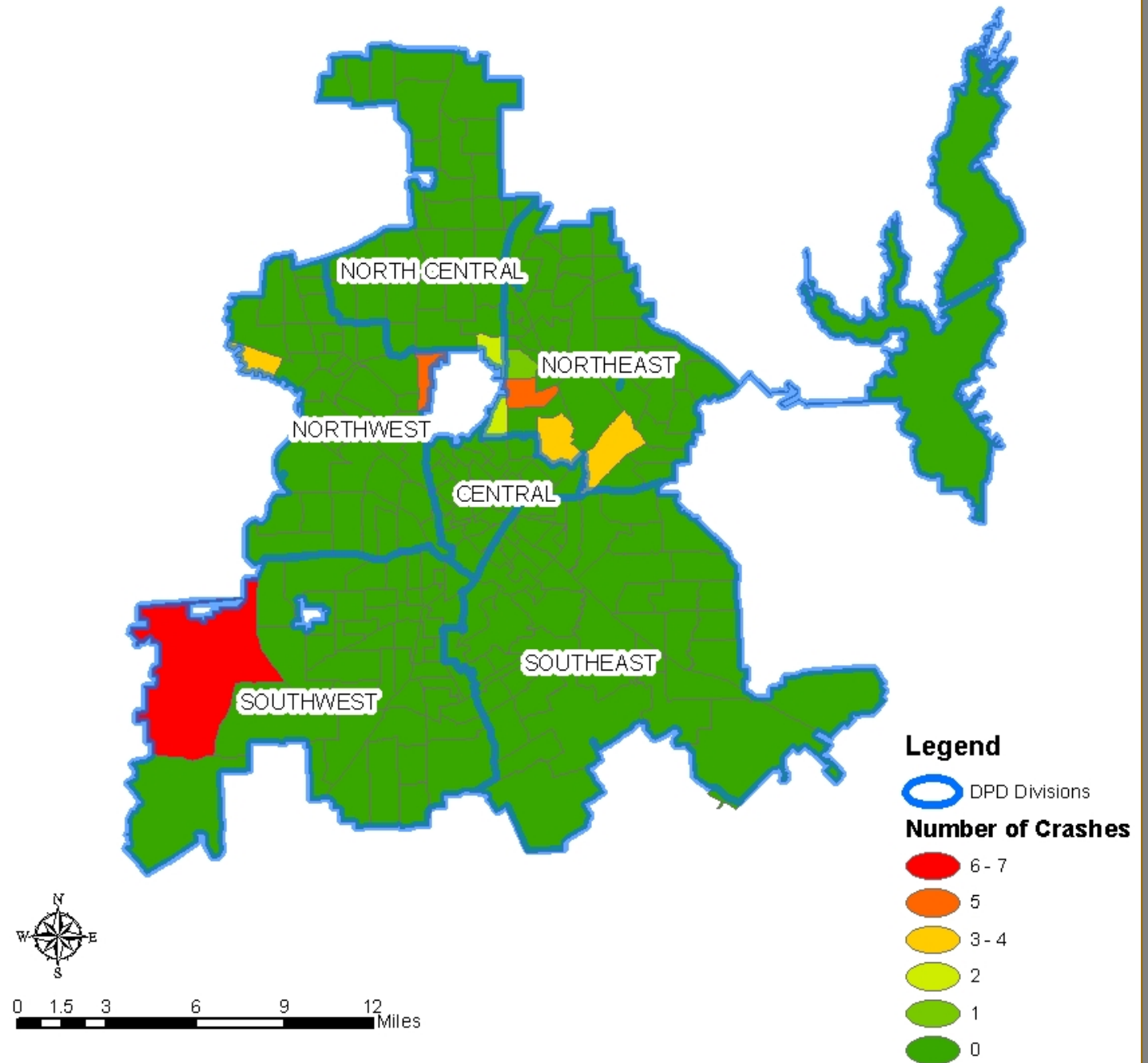
Alcohol-Related Fatal Crashes by Police Division



Prepared February 11, 2005

Note: All Data In This Exercise Are Fictitious

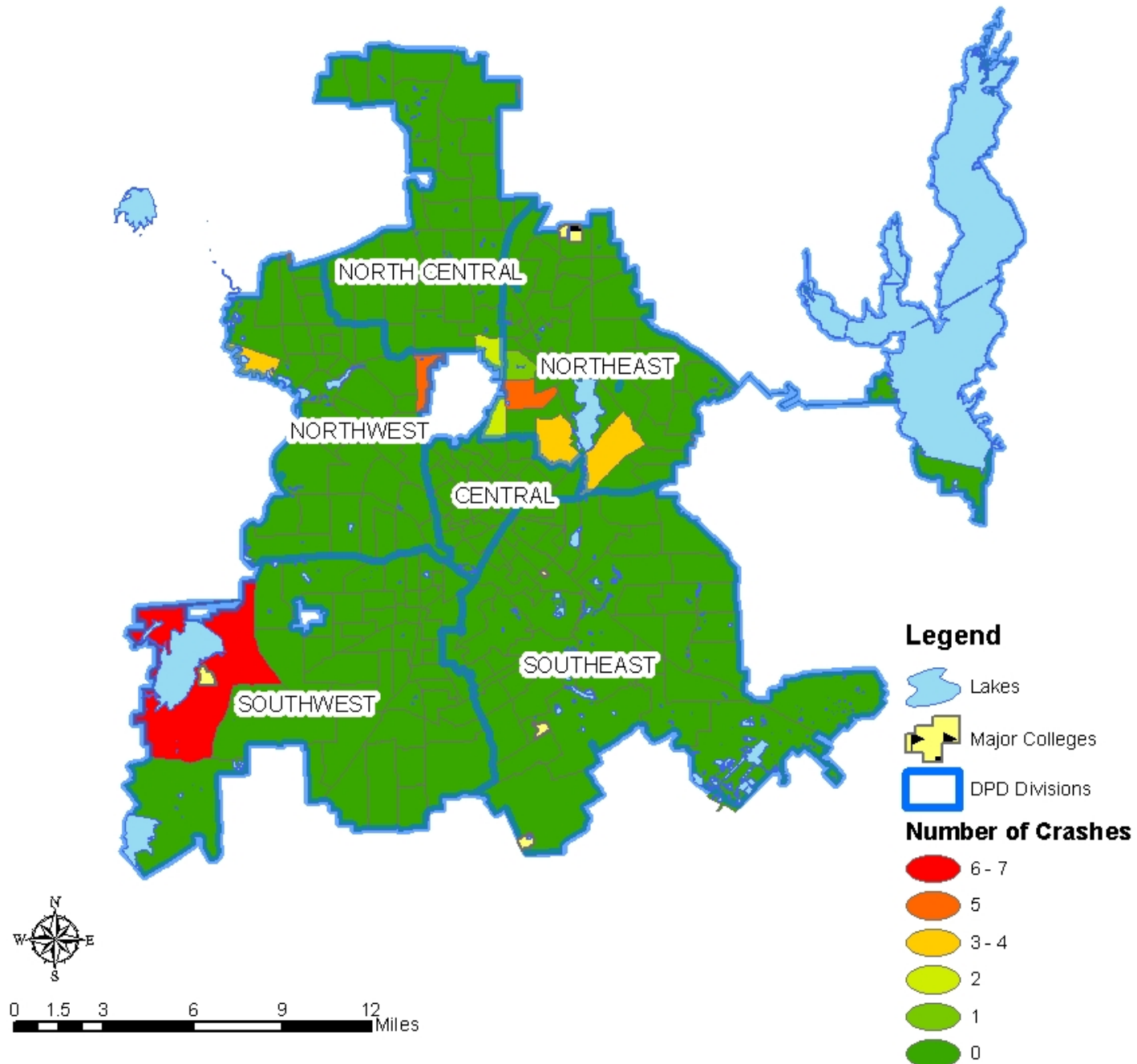
Alcohol-Related Fatal Crashes by Police Beat



Prepared February 11, 2005

Note: All Data In This Exercise Are Fictitious

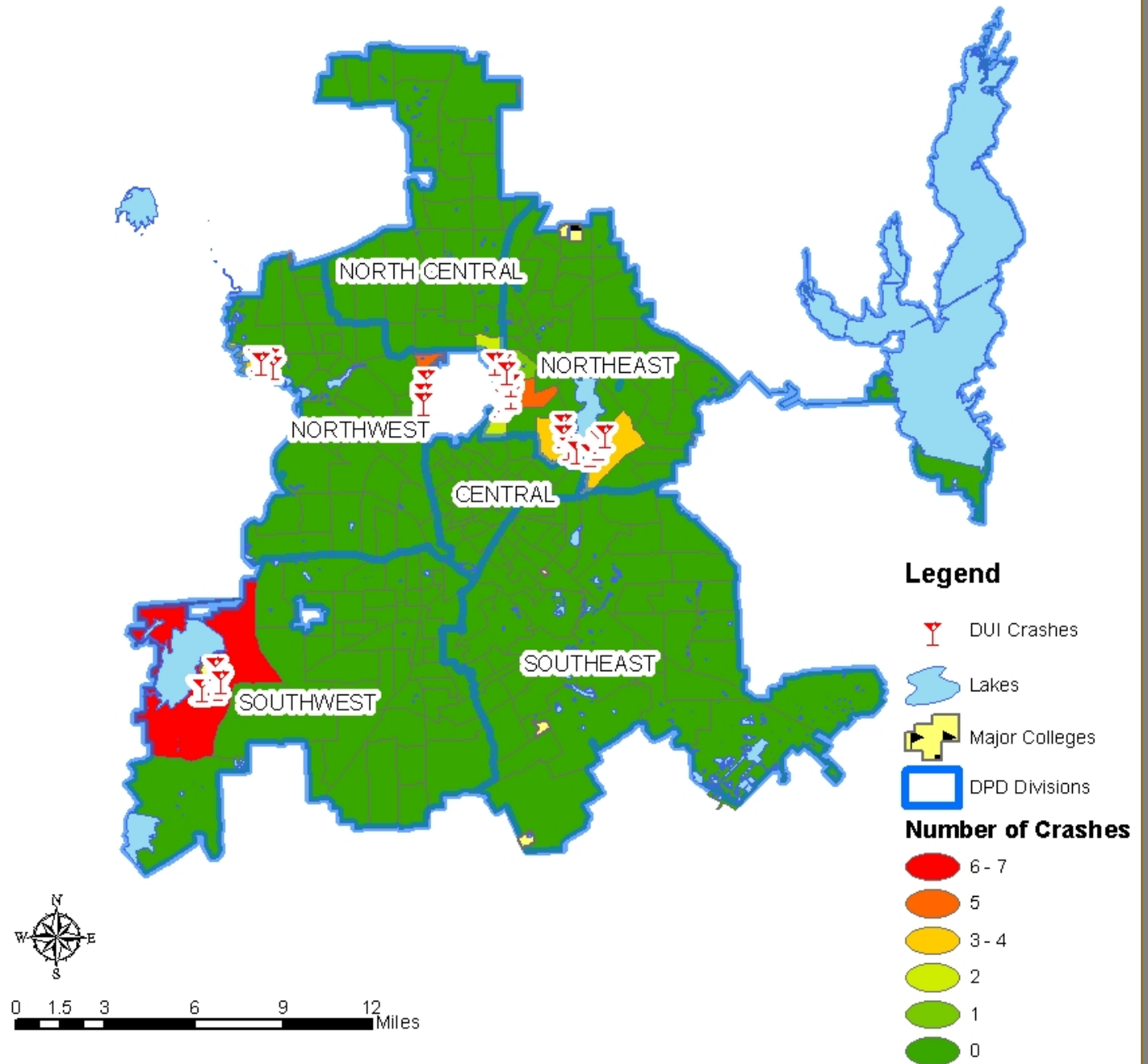
Alcohol-Related Fatal Crashes by Police Beat



Prepared February 11, 2005

Note: All Data In This Exercise Are Fictitious

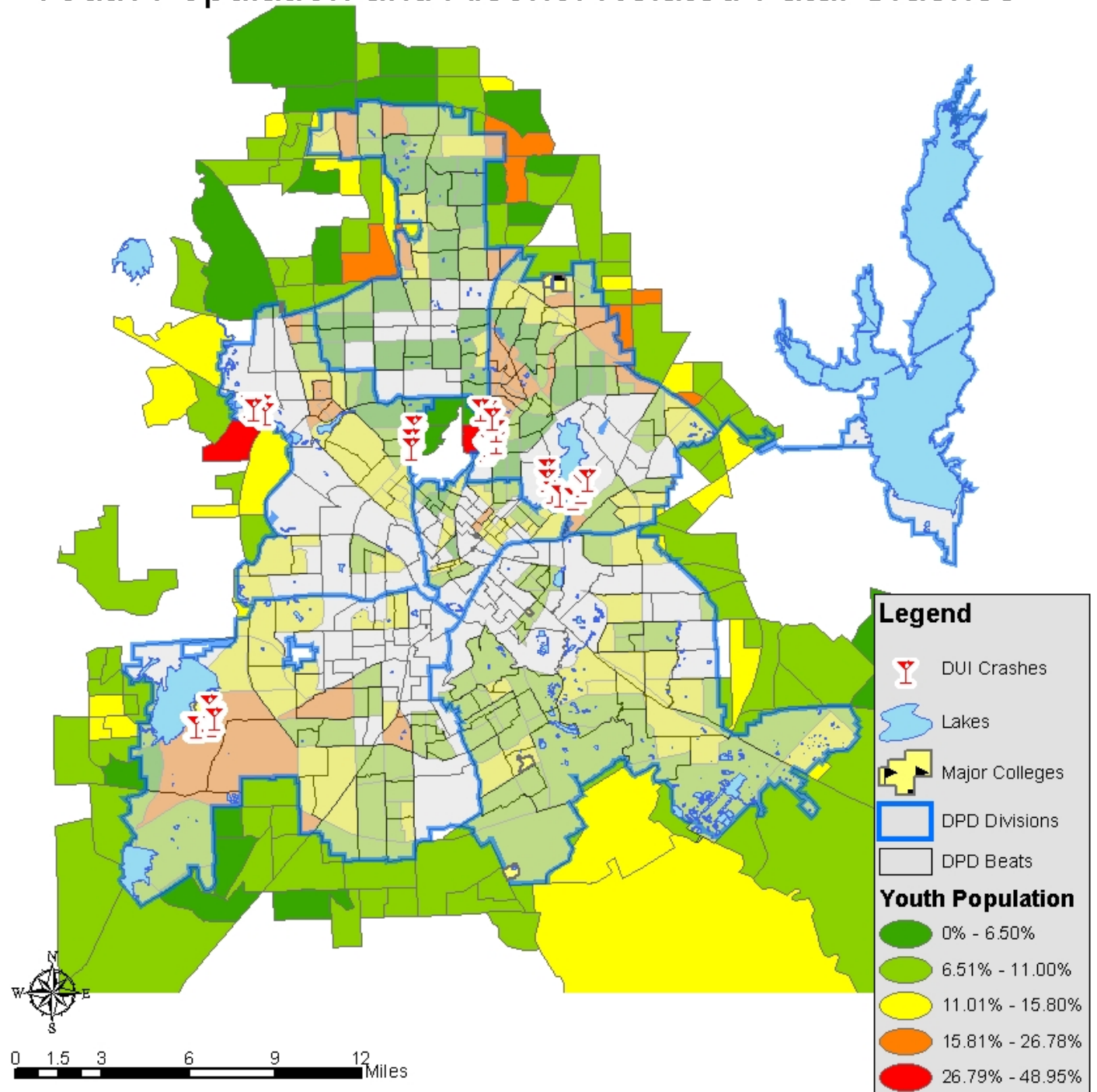
Alcohol-Related Fatal Crashes by Police Beat



Prepared February 11, 2005

Note: All Data In This Exercise Are Fictitious

Youth Population and Alcohol Related Fatal Crashes



Prepared February 11, 2005

Note: All Data In This Exercise Are Fictitious

A close-up, high-angle view of a brass compass rose. The compass is circular with a central gnomon casting a shadow. The face of the compass is engraved with cardinal and intercardinal directions: N, NE, E, SE, S, SW, W, and NW. The background is a warm, golden-brown color, possibly the surface of the compass or a similar material. The text is overlaid on the lower half of the image.

Crime and Social Issues

Communities and Crime
CJS 4323

Communities and Crime

- About The Course...
- The Importance of Spatial Thinking
- Notion of Space in Communities
 - Crime is not evenly spatially distributed
 - Population Factors
 - Structural Conditions
 - Not just crime, but spatial features of the social fabric